



**HUNTERS**<sup>®</sup>  
HERE TO GET *you* THERE

16 Fieldfare, Leighton Buzzard, LU7 4DG

# 16 Fieldfare, Leighton Buzzard, LU7 4DG

Guide Price £210,000

- STYLISH TWO BEDROOM FIRST FLOOR FLAT
- MODERN WELL EQUIPPED KITCHEN
- SECOND BEDROOM IDEAL AS GUEST ROOM OR HOME OFFICE
- NEUTRAL DECOR AND AMPLE STORAGE THROUGHOUT
- CLOSE TO LOCAL PARKS, AMENITIES AND TRANSPORT LINKS
- BRIGHT OPEN PLAN LIVING AND DINING AREA
- MAIN BEDROOM WITH PRIVATE EN-SUITE
- CONTEMPORARY FAMILY BATHROOM
- TWO ALLOCATED PARKING SPACES
- INTERACTIVE VIRTUAL TOUR

Beautifully finished and thoughtfully designed, this modern two-bedroom first-floor flat offers bright, spacious living tailored for comfort and contemporary lifestyles. The standout open-plan living and dining area is flooded with natural light, creating a welcoming social space ideal for both everyday relaxation and entertaining.

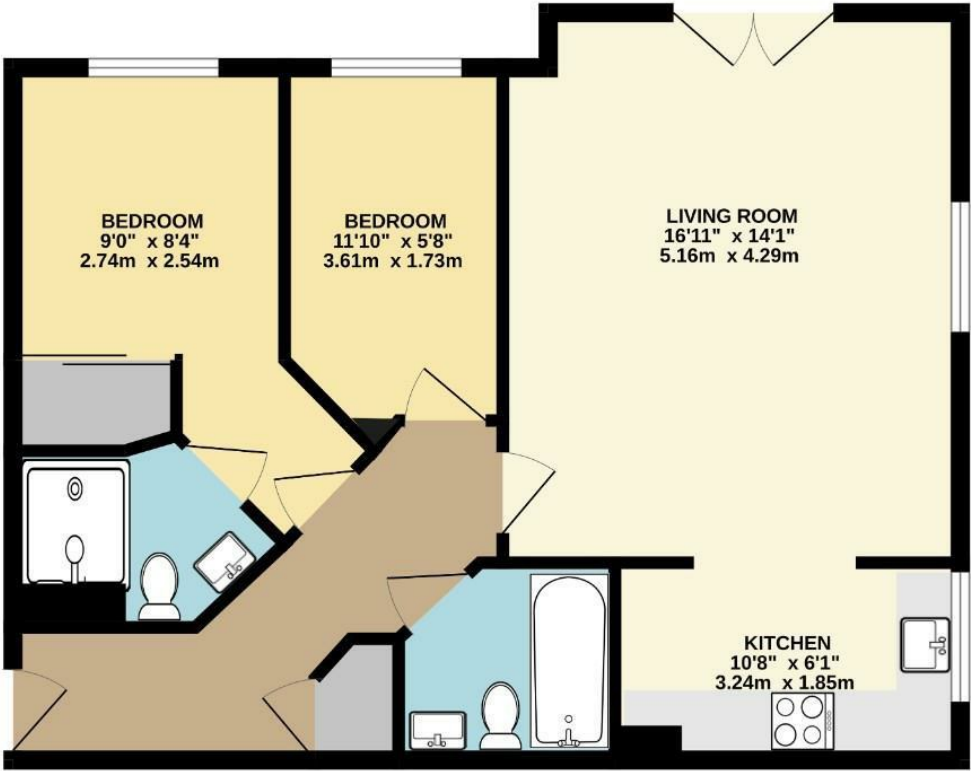
The well-appointed kitchen features modern units and practical work surfaces, providing excellent functionality while maintaining clean, contemporary styling. The main bedroom benefits from a private en-suite, complete with a sleek double-width shower, offering convenience and a touch of luxury. The second bedroom serves perfectly as a guest room, home office, or versatile additional space, complemented by a separate family bathroom finished with modern fittings.

With neutral décor, ample storage solutions, and an intelligently planned layout, the property delivers both comfort and practicality, appealing to first-time buyers, downsizers, or those seeking a low-maintenance home in an excellent setting.

Externally, the flat benefits from two allocated parking spaces, a rare and valuable asset in this sought-after area. Situated within easy reach of local parks, the location is ideal for outdoor pursuits and leisurely walks. Excellent transport links provide effortless access to the town centre and surrounding areas, ensuring smooth commuting and connectivity. A wide selection of nearby amenities further enhances the convenience of this superb home.

A beautifully presented and exceptionally well-located property offering modern living, generous space, and outstanding convenience — an ideal home in a desirable setting.

FIRST FLOOR



Whilst every attempt has been made to ensure the accuracy of the floorplan contained here, measurements of doors, windows, rooms and any other items are approximate and no responsibility is taken for any error, omission or mis-statement. This plan is for illustrative purposes only and should be used as such by any prospective purchaser. The services, systems and appliances shown have not been tested and no guarantee as to their operability or efficiency can be given.  
Made with Metropix GS205

